

IN compass

all things—Grant County



Greater
Grant County

NEWCOMER'S GUIDE



CHAMPIONS OF Collaboration & Opportunity

For over 35 years, the Grant County Economic Growth Council has been known for its track record of working at the “speed of business” to promote a vibrant, sustainable economy that attracts and empowers business growth and innovation.



“

Every time that we have expanded, the Growth Council has been at our side helping us along.”

– STEVE WICKES, AGRICOR

The Growth Council has gone to great lengths not once, but twice, to help us secure new locations.”

– BOB KRAMER, CANINE'S CHOICE



Supporting
the local business
expansion
and retention



Fostering the
entrepreneurial
environment



Building up
and retaining
a skilled
workforce



Attracting
businesses
to Grant County



Collaborating
with local
organizations,
government
& educational
institutions



START NOW

AT IVY TECH COMMUNITY COLLEGE MARION



REGISTER **NOW** AND GET STARTED ON YOUR EDUCATIONAL JOURNEY

IN PERSON AND ONLINE CLASS OPTIONS

Ivy Tech Marion offers the financial and course flexibility that provides you with the opportunity to advance in your career or transfer to a partner institution. We offer degrees and short-term certificates in fields where workers are needed most, so you can be ready to get started in a career quickly.

Ivy Tech Marion offers many programs through our various schools of study that are aligned with employer needs. Our students are sought out for good paying careers by some of the top companies in Indiana. Our state of the art facilities and equipment give you hands-on, relevant experience that make you career ready right away.

MARION CAMPUS ACADEMIC PROGRAMS

- Agriculture
- Welding
- Industrial Technology
- Advanced Automation and Robotics
- General Studies
- Accounting
- Business
- Supply Chain Management
- Early Childhood Education
- Cybersecurity
- Software Development
- Nursing
- Healthcare Specialist
- CNA
- Phlebotomy
- Medical Imaging
- Criminal Justice
- Human Services
- Addiction Studies

IF YOU'VE GOT QUESTIONS, WE'VE GOT ANSWERS.

Call us at 765-651-3100 ext. 3301
261 S Commerce Dr. Marion, IN 46953
askmarion@ivytech.edu

Ready to get started?

APPLY NOW FOR FREE

at IvyTech.edu/ApplyNow

The Greater Grant County Chamber of Commerce is a comprehensive group of businesses and organizations dedicated to fostering a cooperative effort for the commercial betterment of Grant County.

Welcome	2	Gas City/Jonesboro	26-28
Arts & Culture	4-11	Fairmount/Fowlerton	30-32
Residential Living.	12-13	Converse/Sweetser/Swayzee	34-37
Parks and Recreation	14-20	Upland/Van Buren/Matthews	38-41
Marion	22-24	Destination Guide	42-43

STAT REFERENCES: [Census.gov](https://www.census.gov) | stats.indiana.edu | [countyoffice.org](https://www.countyoffice.org)

PHOTOGRAPHY CREDITS:
Glen Devitt Photography
Fairmount photos credit to Mark Kinnaman
“Experience Fairmount” photo credit to Main Street Fairmount
Cardinal Greenway of Grant County on Facebook



Cindy Kohlmorgen
President,
VIA Credit Union
GGC Board Chair



Greater Grant County
Chamber of Commerce
217 S. Adams St. | Marion, IN 46952
P: (765) 664.5107 | [GoGreaterGrant.org](https://www.GoGreaterGrant.org)

Welcome

On behalf of the Marion-Grant County Chamber of Commerce, I would like to welcome you to our community! Grant County is an outstanding place to live, work, and grow a business. Whether you are considering a move to Grant County or you’re already a resident of our thriving community, I’m sure you’ll find Marion and the surrounding area to be full of heart and rich with opportunities!

It is an exciting time in Grant County, good things are happening, and there is no better time to join our community!

As you look through the Newcomer’s Guide, you’ll find sections on the Arts & Culture, Residential Living, and Outdoor Recreation, in addition to a few pages on each specific community in the county. But don’t worry!
Grant County is exceptionally well-connected, and you’ll be able to get around the entire county with ease. Consider all of the amenities you find in this guide to be just at your fingertips when your family makes a move to Grant County!
Please don’t hesitate to ever reach out to the Chamber. We are here to help our community thrive and grow!



**EVERY STUDENT
MATTERS**



MISSISSINEWA COMMUNITY SCHOOLS

provides children with an accountable, high quality, rigorous education in a safe, nurturing environment; developing the full potential of each child and preparing them for lifelong success in their personal lives and careers, wherever they may be in the world.

Serving every child, every day, MISSISSINEWA COMMUNITY SCHOOLS strives to:

- Increase achievement by challenging and supporting each student to reach his/her highest potential.
- Address the needs of the whole child by ensuring all students feel healthy, safe, engaged, supported, and challenged, with opportunities for social/emotional learning and growth.
- Prepare all students with the skills, awareness, and desire to actively contribute as productive citizens, locally and beyond.
- Provide professional staff with the knowledge, skills, and resources necessary for highly effective delivery of instruction and services.





Central Indiana Ethanol LLC,
Chairman's Circle Member



Heart To Heart Hospice,
Chairman's Circle Member



The Marion Philharmonic Orchestra



The Marion Philharmonic Orchestra, or as it is referred to in Grant County as simply the MPO, is a hidden gem of our community. This orchestra has enriched the culture of the community for 51 years, fostering a greater appreciation and understanding of music through live performances.

Since its start in 1969, the MPO has grown under the direction of 7 conductors from being comprised of students and local area musicians to the complete professional orchestra it has now become. Today, professional musicians from across Indiana perform the music of the great

classic orchestral composers and modern compositions and movie scores. The MPO regularly performs at Marion High School, Indiana Wesleyan University, and Taylor University and non-traditional venues such as parks, coffee shops, and the local library museum.

More details about the Marion Philharmonic Orchestra's upcoming concerts and ticket information can be found at mpomarion.org

The Community School of Arts

The Community School of the Arts is located in downtown Marion, Indiana, and has provided arts education and enrichment to Grant County and surrounding counties for more than 25 years. Located at 305 S. Adams Street downtown Marion on the Courthouse Square, CSA attracts students from more than seven counties to the area for an array of opportunities in the arts.

CSA has the vision to ignite a community of potential through arts and creativity. Classes in the performing arts, including theater and dance, music, visual and culinary arts, are available to students of all ages.

CSA's Theatre CompANY, a preprofessional theater program, includes students aged 8-18 who desire serious theatre training. Each year the Community School of the Arts provides an opportunity for local public, private, and

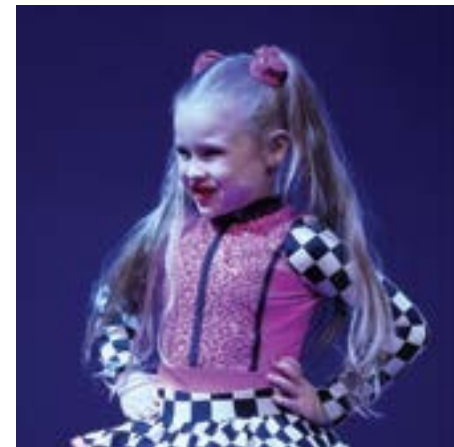
homeschool students in grades 1-6 to attend a performance presented by the Theatre compANY in the Student Performance Series. This program was created to expand the impact CSA has by exposing nearly 4500 students to theatre annually. Additionally, CSA presents the annual Performance Series featuring Broadway-style theatrical performances to the community.

CSA's CREW, a recreational hip hop performance company made up of students ages 8-18, performs at local and regional sporting events, including Pacers games. For children and adults, CSA provides a multitude of programming, both recreationally and preprofessional. Grant and surrounding counties, including

CSA's partnership with Marion Community Schools-the CSA Arts Academy and after-school care programming, community theatre programming, private and group lessons, performances, community arts engagement events, and more. CSA stands as a cornerstone for the arts in Marion and Grant County, serving thousands each year and bringing depth to the cultural experience in the community.

Join us at the Community School of the Arts, where the creative opportunities are endless.

Visit csa-marion.com for more information.



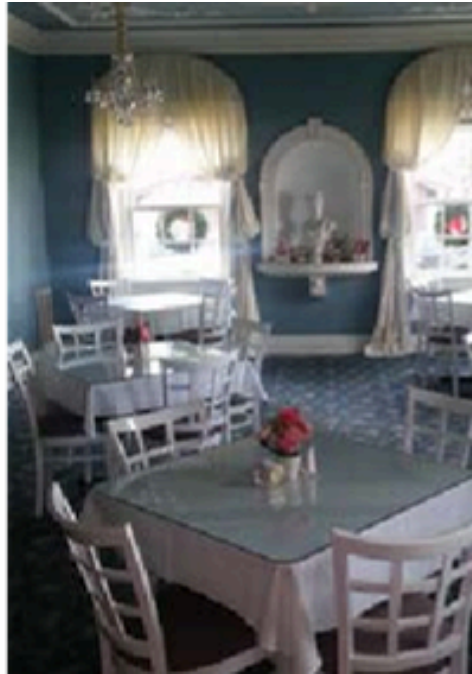


Hoosier Shakespeare Festival

Hoosier Shakespeare Festival is a not-for-profit repertory theatre company that specializes in producing outdoor theatre with simple staging practices, live music, audience interaction, and, of course, excellent quality performances. Those who attend a “Hoosier Shakes” show can expect a fast-paced, understandable approach to the Bard that includes laughter, joy, terror, and thrilling combat scenes. Professional actors from Indiana and around the nation are supplemented with student artists. Whether comedy or tragedy, they embrace the language in a way that makes each show

understandable and exciting. Many of the actors are talented musicians, enliven performances with musical numbers and underscores, and play engaging, modern-day music for pre-show and intermission entertainment. The summer season is presented on a “pay-what you will” basis. Register online for complimentary tickets. Donations are kindly accepted to help keep the joys of Shakespeare accessible for all.

See hoosiershakes.com
for summer and year-round
programming.



THE WILSON-VAUGHAN HOSTESS HOUSE

The historic Wilson-Vaughan Hostess House was designed by the famous architect and builder Samuel Plato and commissioned to be built in 1912 by a wealthy Marion businessman who gave it to his bride as a wedding gift. That gentleman was J. Wood Wilson, who became vice president of Marion National Bank. The mission of the Wilson-Vaughan Hostess House, a beautiful historic architectural landmark listed in the National

Register of Historic Places, and located in Marion, Indiana, is to continue to promote and encourage civic pride through community participation in civic projects, cultural events, exhibits, and social events both public and private. Due to Covid-19 restrictions, meal reservations are required. Guests may call the Hostess House at 664-3755 for various delicious menu choices that include soups, salads, and sandwiches available

for dine-in and carry-out. The House offers Peggy's Boutique on the second floor. Gifts include jewelry, clothing, baby items, purses, kitchen items, and miscellaneous items. The House provides a Bridal Dressing Room, like weddings, bridal showers, and baby showers are held at the House. Annually, fashion shows are held at the House. Fashion Boutiques from Kokomo and Wabash are favorites to sponsor our "Girls

Night Out" shows. A buffet dinner is offered before the show, and a whole house enjoys an evening of fashion, fun, and fellowship. In the fall, the House provides a wine tasting event. The Board offers the food for each course. This event sells out fast. Our popular Christmas event is Dining With Dickens. The House has held this favorite activity for five years. The Marion Lyric Club Madrigal Singers provide the



music, and local broadcaster and historian Ed Breen reads from Dickens. The dinner menu is taken from Dickens' own Christmas recipes. The Madrigals move from room to room, providing music as guests enjoy their dinner. The beautifully decorated House puts everyone in the Christmas spirit! For the past five years, the Hostess House has acknowledged Black History Month and brought awareness to the community by bringing the Marion High School Black History Club to the Hostess House to perform part of their play. We provide a buffet dinner

and then invite our patrons to go to the ballroom (third floor)—they can use the stairs or the elevator. Once there, they are entertained by a talented group of students who perform part of their Black History Play. They sometimes have guest performers in their play who are MHS graduates. It is a beautiful evening of food, fun, and entertainment. Other social activities offered in the House include watercolor classes, Pysanky Egg Decorating Workshops, Flower Arranging Workshops, and Cyber Security lectures. Please call the Hostess



House at (765) 664-3755 for more information. Cultural events offered at the House might include provisions for conferences and meetings. Local artists display their works as well. Several art exhibits have been held at the House. Marion is proud of its beautifully restored, historical home, offering lunch daily and open evenings and weekends for special events. The Board encourages you to stop by or call for a tour, make a reservation for lunch, or visit Peggy's Boutique.

You are welcome anytime. Lunch is served Mon-Fri from 11 am to 2 pm. Located at 723 West Fourth Street, Marion, IN 46952.



For more information can be found on the website for hours of operation and holidays. hostesshouse.org

Marion Public Library Museum

There is a hidden treasure in Marion – the Marion Public Library Museum. The Museum is adjacent to the Marion Public Library. The Carnegie Museum building housed the original Library that was built in 1888. When the new Library was opened in 1991, the Carnegie building was transformed into a museum that gives a glimpse into the life and history of early Marion and Grant County.

The Museum underwent a significant renovation in 2016 when History Made Here opened in November of that year with an exhibit on the Gas Boom era. The Museum continues to evolve and

currently features an exhibition on the Weaver community of the 1800s.

In addition to the exhibits, the Museum also has a collection of Fine Art which includes paintings from Richmond and Nashville, Indiana artists. Several paintings are on display in the Indiana Room (also housed in the Museum), the Library, and the Museum.

**Look no further than the Marion Public Library Museum for a journey into the past.
For hours, please call 668-2900, ext. 1101.**



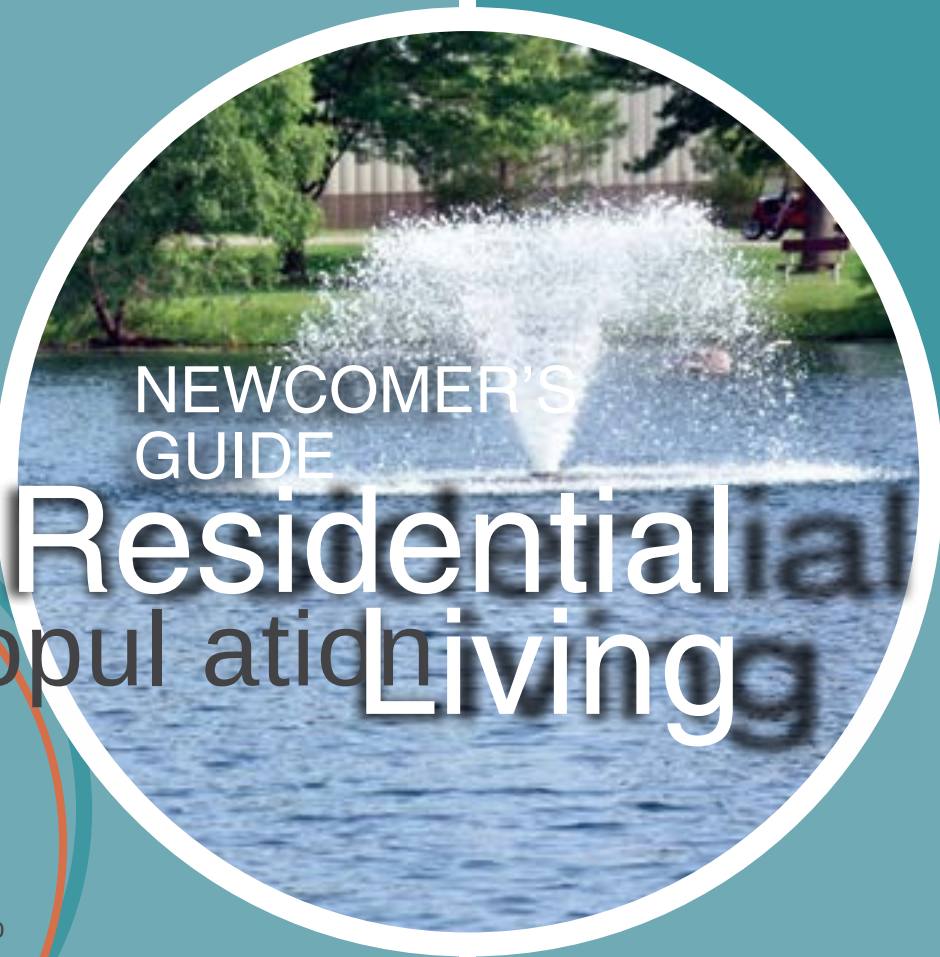


The Quilters Hall of Fame

The Quilters Hall of Fame is a non-profit organization whose mission is to celebrate the art of quilting and the people who have made significant contributions to the quilting world. We are located at 926 South Washington Street, Marion, Indiana, in the former home of Marie Webster, an influential quilt designer from the early 1900s. The Colonial Revival home, a National Historic Landmark, has been restored as a museum and houses four quilt exhibits per year. Behind the home, Marie's garden brick walk features engraved sentiments by visitors. Every year in July, we hold an event to honor our newest honoree with quilt shows, vendor mall, lectures, and workshops. We have recently purchased the PCC & St. Louis Train Depot, and when renovations are complete, we will have classrooms and a research library.

[See more information on our website, quiltershalloffame.net](http://quiltershalloffame.net) or find us on Facebook.





NEWCOMER'S
GUIDE

Residential Living

People-Population



Population, Census

April 1, 2010 70,061

April 1, 2020 66,674



Percent Change -6.1%

April 1, 2010 to

July 1, 2019, (V2019)



Wal-Mart Distribution Center #7055,
Chairman's Circle Member



Marion Health,
Chairman's Circle Member

Grant County Indiana, A Community to Call Home

Grant County has the benefits of a small community, with access to large metropolitan areas only a short drive away. Quality of life resources abound in Grant County: walking trails, Civic Theater, the Philharmonic Orchestra, the Community School of the Arts, and even a water park. There is something in Grant County for everyone.

Grant County is unique, having two universities within its borders. Both universities thrive and attract students. The students embrace our community and become an integral part of the volunteer efforts for several charities and even residents. As members of the REALTORS® Association of Central Indiana and the Indiana Regional Multiple Listing Service, Grant County REALTORS® are equipped to assist you in your home-buying decisions. Having a concerned but objective third party helps you stay focused on the most critical issues.

GrantCounty REALTORS® offers local market knowledge, negotiation skills, legal forms compliant with the law and current with professional practice, as well as access to a network of industry professionals. Most people buy and sell only a few homes in a lifetime, usually with quite a few years between each sale. Even if you've done it before, laws and regulations change. Grant County REALTORS® handle hundreds of transactions throughout their career.

Our listing inventory offers individuals and families an opportunity to own an affordable home in a community-minded environment. Whether you're interested in finding a home in a rural community or prefer city living, Grant County has it all! Single-family properties, multi-family, condominiums, and modular homes can all be found. A home is so much more than four walls and a roof.

And for most people, property represents the biggest purchase they'll ever make.

To find an agent or home, we invite you to search 'Grant County, IN' at realtor.com for REALTORS®, firms, and listings in the Grant County area.

Homeownership and the American Dream are alive and well in Grant County.

Grant County Housing Stats



Median Household Income
2015-2019 \$44,356



Owner-Occupied Housing Unit Rate
2015-2019 68.4%

Median Age
2020 38 years old

Median Property Value
2015-2019 \$92,700

Median Gross Rent
2015-2019 \$700

Median Selected Monthly Owner Costs
With Mortgage: 2015-2019 \$917
Without Mortgage: 2015-2019 \$347

Education: Public Schools - 33 / Private - 3
Universities- 3

1620 E Hoffer St | Kokomo, IN 46902
(765) 457-0089 | info@raci.org

RACI
REALTORS® Association
of Central Indiana

residential living

gogreatergrant.org



Indiana Michigan Power, Chairman's Circle Member

Insurance Management Group,
Chairman's Circle Member



NEWCOMER'S GUIDE PARKS & Recreation



Ronald Morrel Jr.-
CEO, Morrell's Scooters

Why do you choose to live and work in Grant County?

What do you love about living and working in Grant County?

I choose to live and work in Grant County because I believe in the advancement and growth of small towns. Small town Indiana is currently a blank canvas for new futuristic businesses that are already flooded in big cities.

I love living and working here because everyone has an opportunity if you have an idea; we are small enough to give it a try but big enough for it to sustain if it's a good idea. Well, my selfish and bias answer would be Morrell's Scooters. A surprise to someone visiting would be all the talent and things to do in Grant County. A common thing said is, "there is nothing to do in Marion/Grant County. However, when you look at it, we have many things to do.



Carey Services,
Chairman's Circle Member

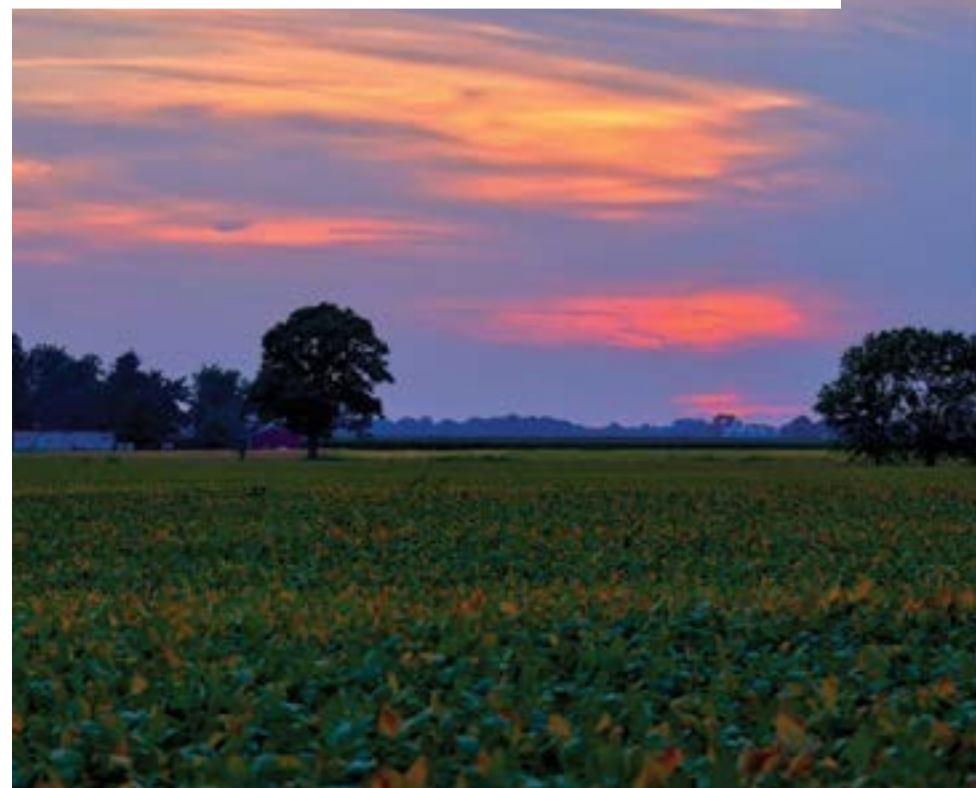




Keenan and Tashema Davis

We chose to live and work in Grant

County for many reasons, but the main reason is that we believe that there is great potential here. Grant County has all the tools and resources necessary to have a thriving and prosperous community. Since moving here in 2013, we have seen great people making significant moves to restore hope and change the negative trajectory this community has been on. We need intelligent and capable people to be brave and help restore broken communities instead of leaving to places that are already thriving. Enhancing broken communities helps us all. The Davis' plan on doing that very thing!



The Gardens of Matter Park



Marion is home to a prestigious escape of overflowing beauty in the Gardens of Matter Park. Nestled in the 101-acre Matter Park, these 6+ acres are stunning, with over 7,000 annuals enveloping bronze statues, pagodas, fountains, and more marvels. The Gardens are open year-round, attract thousands of visitors each year, and provide a unique and exquisite sense of place. The Gardens include an award-winning habitat for Monarchs in the Butterfly Garden, the “Fit for Life” Garfield statue along the Grant County Garfield Trail, and an interactive Children’s Vegetable Garden. If you desire the Gardens to be your destination for your wedding or private function, it is usually booked 1-2 years in advance. The Garden House is temperature-controlled with tables, restrooms, kitchen, fireplace, and piano. The Meadow annex hosts a pavilion with picnic tables and an outdoor kitchen.

Discover a lot more at cityofmarion.in.gov/gardens, and follow @GardensofMatterPark on Facebook.



The Mississinewa Riverwalk

Marion, including the heart of the city, is fortunate to be a destination of the Mississinewa River, a tributary of the Wabash River. Our Mississinewa Riverwalk reveals a 2.25-mile paved trail starting downtown at the Washington Street Bridge near cafés, bike shops, and YMCA and ending at the fishing pond near the Gardens of Matter Park. Residents and visitors walk, run, bike, and enjoy the Riverwalk in many ways

for recreation and fitness. Along the Riverwalk, you'll find several public parks with playgrounds, shelters with seating and open grills, historical monuments, and beautiful green spaces with magnificent mature trees. There are also plenty of parking lots at various points. The Riverwalk also accesses tennis and pickleball courts, a disc golf course, a small amphitheater, and a canoe launch. The Mississinewa Riverwalk is also used as the main route for the annual Walkway of Lights display each holiday season.



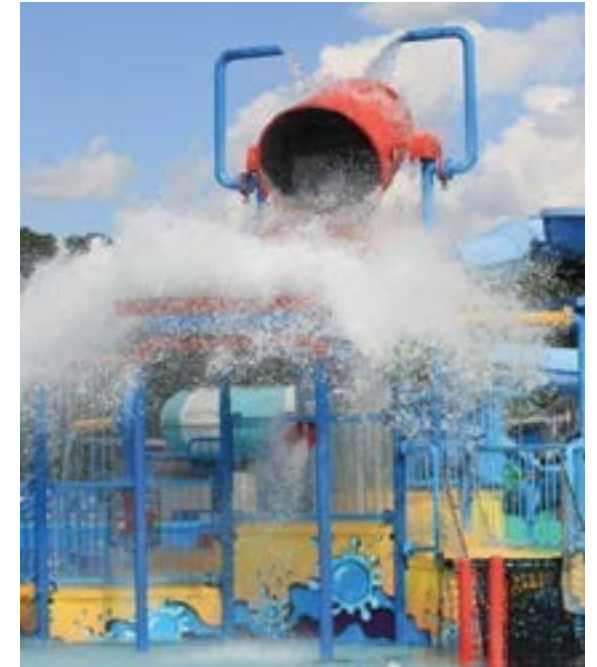


The Splash House

One of Marion's central amenities and tourist attractions is the Splash House - a family-friendly, affordable water park for the outdoor recreation enthusiast, water-loving adventurer, and even the lounging sun-day seeker. The Splash House is a public park inviting both residents and non-residents to enjoy its twists, turns, peaks, and depths. Get your thrills from two Racer Slides and Big Flush Slide "hang ten" in Indiana's only surfable Wave Pool...get doused by a vast water bucket atop the Kiddie Play Area...or relax in the casual current of the Lazy River. Ongoing programs include "Open Surf" and "Lazy River Walk." The Splash House has ample seating, concessions, an event room, and locker rentals. The 6.5-acre park hosts community events and could be the perfect place for yours. Visit splashhouse.org to learn how to reserve your private party or corporate event.



Follow us on Facebook & Instagram
MarionSplashHouse, or on
Twitter @SplashHouse.



Auto Insurance • Home Insurance • Business Insurance

NORRIS
INSURANCE



"We'll Come Running!"

Contact Us! We're Ready!

877.395.6200 | info@NorrisInsurance.com

www.NorrisInsurance.com

Marion • Fairmount • Swayzee • Upland

Financial strategies built just for you.



CoryKorporal
Financial Advisor
1605 W Kem Rd Marion, IN 46952

edwardjones.com

Edward Jones[®]

parks & recreation

gogreatergrant.org

Arbor Trace

You are invited to discover Grant County and Arbor Trace Golf Club, voted “Grant County’s Greatest” golf course by the Chronicle-Tribune’s 2007, 2012, 2013, 2014, 2015, 2016, 2018 & 2020 Readers’ Choice Awards. Furthermore, it is included in the 2008-2009 edition of Golf Digest’s Best Places to Play! Arbor Trace Golf Club is a family-owned and operated 18-hole public golf facility. Our club offers four sets of tees from 4,785 to 6,690 yards for every skill level, a family tee that plays 3,275 yards, a double-sided practice range with one end featuring bentgrass,

130-yard short game practice area, a practice chipping green with bunker, practice putting green, golf carts with GPS, golf flag reflectors, along with the BEST coney dogs in town!

The golf shop is fully stocked, featuring equipment from Titleist, Cleveland, Foot-Joy, Callaway, Odyssey, Antigua, Eco tees, and Epoch sunglasses. Grips from Golf Pride, Winn, and Superstroke are available, along with regripping services. Head Golf Professional Doug Piper offers lessons to golfers of all ages.

We proudly host the Insurance Management Tuesday Morning Scramble. Arbor Trace is home to the Indiana Wesleyan University Women’s golf team and the Oak Hill and Eastbrook High School (Boys & Girls) golf teams.

Arbor Trace also serves as the 5th stop on the Grant County Garfield Trail, with its wooden carving of “Duffer Garfield” located inside the clubhouse.

Whether your group is small or large, we provide a fun and stress-free experience for holding

your fundraiser, family reunion, business/corporate outing, or whatever the occasion might be.

Call us at (765) 662- 8236, view our website arbortracegc.com or follow us on Twitter, Instagram & Facebook for more information. We look forward to seeing you!

Cardinal Greenway

Cardinal Greenway is a 62 mile paved Hall of Fame Rail-Trail system spanning five East Central Indiana Counties. We enjoy thousands of trail users each year and many begin their journey on the Cardinal Greenway in Grant County and then have the option to travel south through

Delaware, Henry, Randolph and Wayne Counties. The paved trail is a perfect resource for running, walking, cycling and just enjoying the outdoors. At Cardinal Greenways, we are changing Indiana through neighborhood, community and county connections and we are doing so

as one of the rare privately owned and operated trail systems. The Cardinal Greenway is free to use and welcomes every resident of our cities, towns and counties and every visitor who comes to us from other places. Cardinal Greenways is dedicated to enhancing the quality of life by developing and

operating facilities and trails to actively connect people and communities.



parks & recreation

Bluffs^e at BLUE Heron Lake

- ☐ Custom Built Estate Homes Exclusive
- ☐ Home Covenants Low Maintenance
- ☐ Custom Villa Homes Available Lots with
- ☐ Lake or Nature Views Automatic Lawn
- ☐ Sprinkler System Public Water and Sewer
- ☐ Utilities Protective Building Standards
- ☐ Lake Access for Residents Enter The Bluffs - and listen to the quiet
- ☐

*Live Well.
Live Here!*

*Enjoy
a long walk
without leaving
home.*



Call: 765/243-0731

For more information,
(including all specifications)
Call Chuck Herriman at : 765/664-7307
or 765/243-0731

Email at: cherriman@shshlaw.com

• Broker Participation Invited

NORTHWESTERN MUTUAL PRIVATE CLIENT GROUP



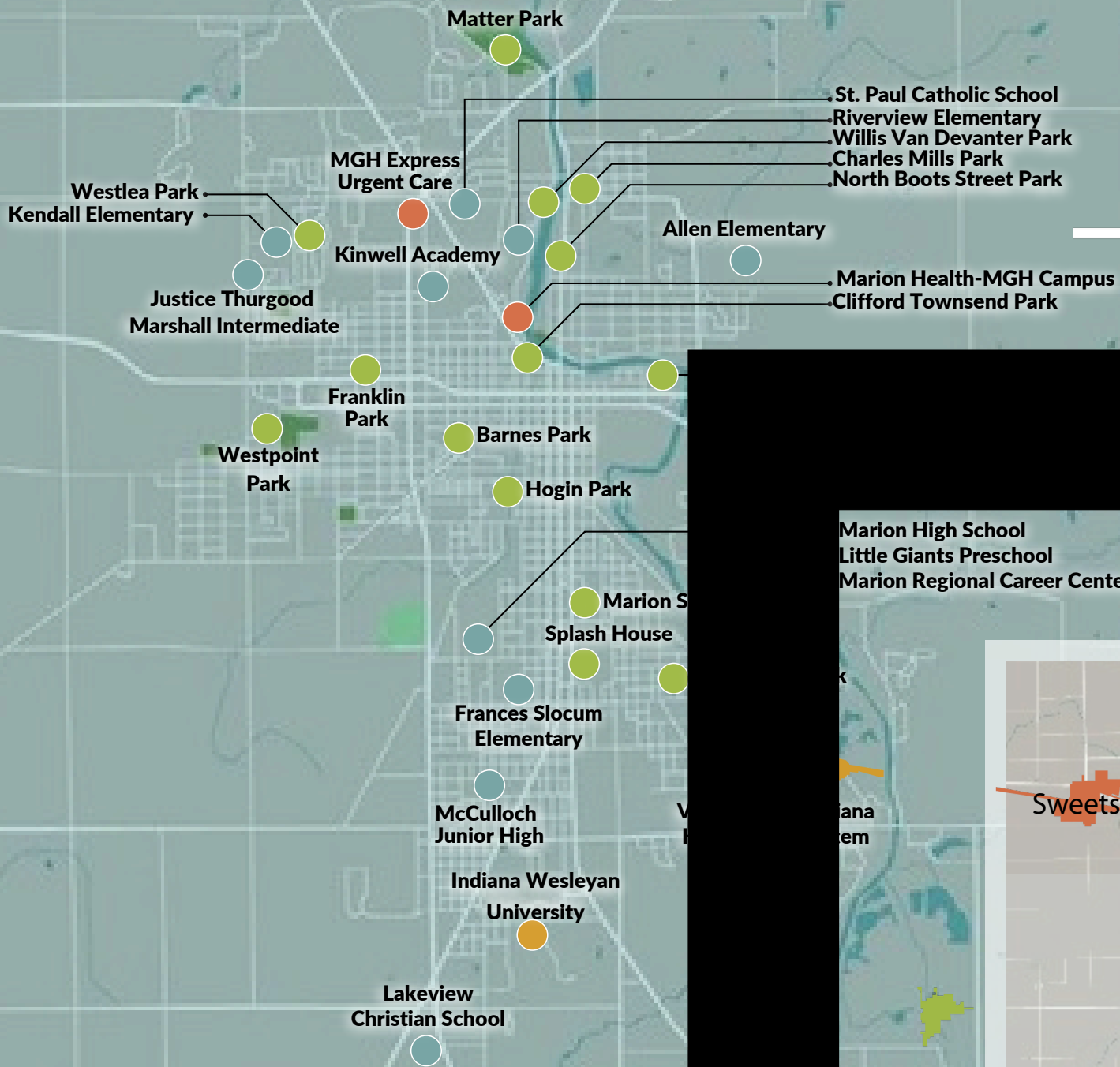
PLAN FOR TOMORROW, LIVE FOR TODAY.

 **SUMMIT**
FINANCIAL GROUP

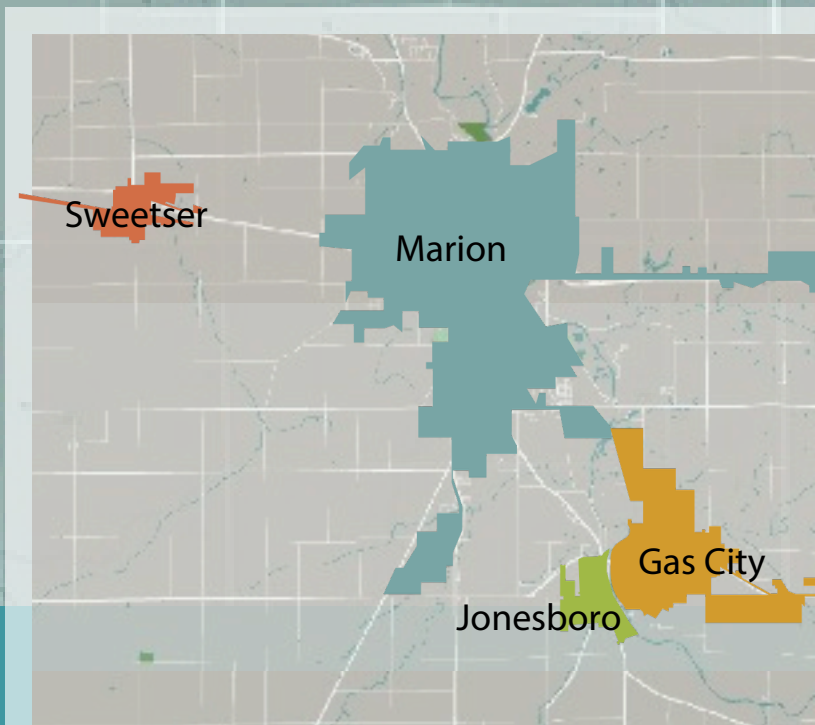


Thomas R. Gearhart, CLU®, ChFC®
765.662.0411
211 S. Washington Street
Marion, IN 46952
summit.nm.com
tom.gearhart@nm.com

Thomas R. Gearhart uses Summit Financial Group as a marketing name for doing business as a representative of Northwestern Mutual. Summit Financial Group is not a registered investment adviser, broker-dealer, insurance agency or federal savings bank. Northwestern Mutual is the marketing name for The Northwestern Mutual Life Insurance Company (NM) and its subsidiaries. Northwestern Mutual Private Client Group is a select group of Northwestern Mutual advisors and representatives and is not a registered investment adviser, broker-dealer, insurance agency, federal savings bank or other legal entity. Gearhart is an Insurance Agent of NM.



Marion High School
Little Giants Preschool
Marion Regional Career Center



Marion

Marion is a small city of just under 30,000 people located in Grant County in the heart of Indiana. Our “City of Champions” is home to many innovative businesses, resourceful and caring non-profit organizations, and hard-working, tenacious, loyal citizens. Marion is one of the best cities in the U.S. to raise a family, offering low tax rates, low cost of living, and many quality-of-life amenities. In 2015, NerdWallet named Marion #3 in the nation of the “Best Small Cities in America.”

Whether you are a business or a family, Marion is a great place to invest. We take pride in our award-winning public gardens, water park, and holiday walkway of lights.

Marion has an outstanding private hospital, innovative VA hospital, and a national cemetery. We are easy to access with one of the best airports in the state. Marion has a longstanding amenity in free city transit with new buses.

Benefits to Living in Marion, Indiana

SAFETY SERVICES/ MUNICIPALITY

City Hall
www.cityofmarion.in.gov
(765) 662-9931

UTILITIES
Water –
Marion Municipal Utilities
www.marionutilities.com
(765) 664-2391

Trash / Recycling –
Marion Municipal Utilities
www.marionutilities.com
(765) 664-2391

Electric – Indiana Michigan
Power Company
www.indianamichiganpower.com (800) 311-4634

Gas – CenterPoint Energy
www.centerpointenergy.com
(800) 227-1376

Library - Marion Public Library
www.marion.lib.in.us
(765) 668-2900

EDUCATION & COLLEGES

Little Giants Preschool
Allen Elementary
Frances Slocum Elementary
Kendall Elementary
Riverview Elementary
Justice Thurgood Marshall Intermediate
McCulloch Junior High
Marion Regional Career Center
St. Paul Catholic School
Kinwell Academy
Lakeview Christian School
Indiana Wesleyan University

IvyTech Community College

Denominations

Baptist
Catholic
Christian
Episcopal
Evangelical

Lutheran
Methodist
Non-Denominational
Pentecostal
Presbyterian
Spirit-Filled

recreations

Cardinal Greenways
Ballard Field Soccer Complex
Barnes Park
Charles Mill Park
Clifford Townsend Park
Franklin Park
Hogin Park
Matter Park
Gardens of Matter Park
Splash House
Westlea Park
Westpoint Park



Hooseir Jiffy Print, Chairman's Circle Member

CONTINUED next

Marion

Marion is home to the largest private college in Indiana, a state-of-the-art tech college, and exemplary public and private schools. While our schools hold many championship titles, our true champions are the citizens that make our community a special place to call home.

There are many neighborhood associations in Marion building and sustaining a welcoming city. Active citizens energize their areas by working together and with local officials and resources to achieve common visions. The city was founded in 1831 by Martin Boots and David Branson, who each donated 30 acres of land to develop a city by the flowing Mississinewa River. After nearly 20 years of settlement following the bloody, victorious historic Battle of the Mississinewa of 1812. Marion was named after the Revolutionary War General, Francis Marion. Marion developed slowly as an agricultural trading center with supporting farm and forest industries. Until the 1880s, when a massive supply of natural gas was discovered in Grant County and much of east-central Indiana. This discovery created the Gas Boom, drastically propelling growth and impacting the course of its industry and economy.

In Marion, you'll enjoy a comfortable hometown flavor while taking full advantage of top-notch amenities and state-of-the-art facilities.

continued

Benefits to Living in Marion

Willis Van DeVanter Park
Marion Skate Park

Health & Wellness

Marion Health-MGH Campus
Marion Health
Express
Urgent Care
VA Northern Indiana
Health Care System



Café Valley, Chairman's
Circle Member



We're paving the way for you to **MAKE YOUR MOVE!**



Get paid to buy a home in Grant County

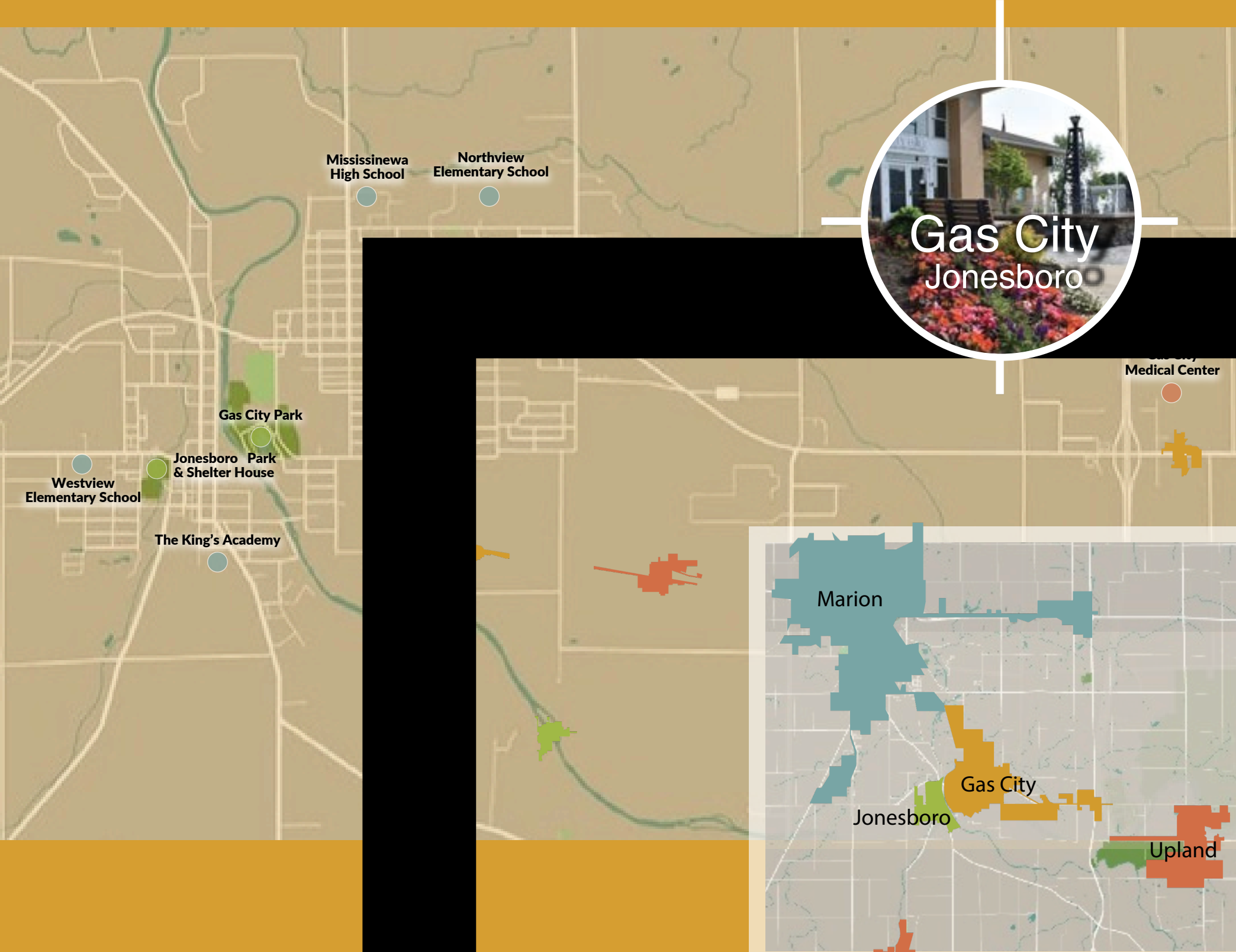
If you're a new employee looking to move to Grant County, Grant for Grads has you covered, offering up to \$7,500 of down payment assistance toward your home.

Easily connect with locals



While you can learn a lot about a place online, the internet cannot offer you personal connections—access to the people, a place's palpable culture, the flavor of the local coffee shop, etc.

Links to Locals, a partnership with Marion-Grant County Chamber of Commerce, offers you a way to learn about Grant County through the eyes and ears of the people who call this place home.



Gas City Jonesboro

Mississinewa
High School

Northview
Elementary School

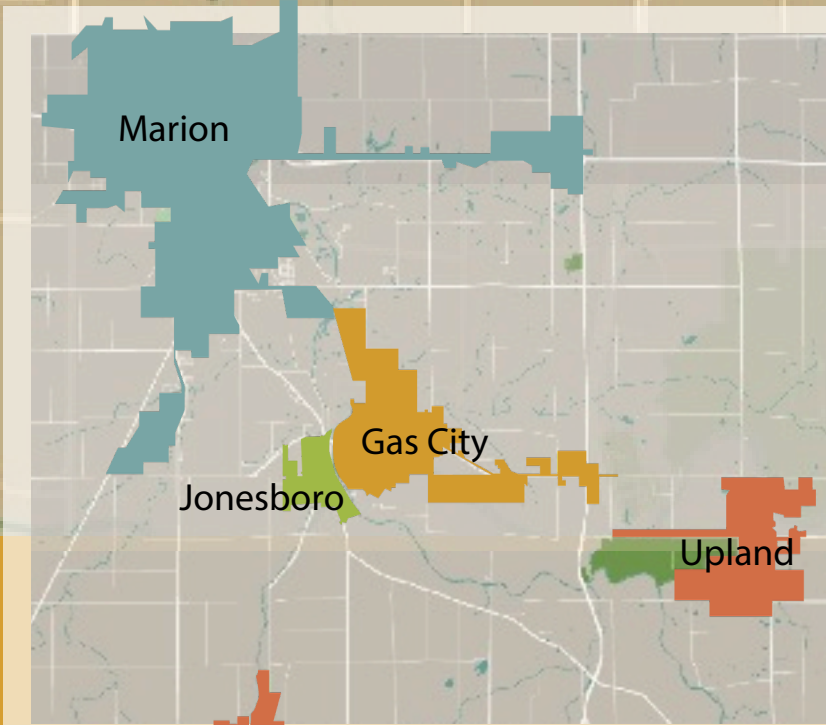
Gas City Park

Jonesboro Park
& Shelter House

Westview
Elementary School

The King's Academy

Gas City
Medical Center



Marion

Gas City

Jonesboro

Upland

Gas City Benefits to Living in Gas City,

Gas City, formerly known as Harrisburg, began as a “Boom Town” when an abundance of natural gas was found in the vicinity in 1887. The original settlement was platted on May 25, 1867. Noah Harris, the founder, was born on June 22, 1823 and died on August 7, 1913. Mr. Harris was a fur trader in his early years, later becoming interested in real estate and the nursery business.

Following the discovery of natural gas, several citizens formed the Gas City Land Company on March 21, 1892. Several days later, the name of Harrisburg was changed to Gas City. On April 4, 1892, the Gas City Post Office was established. The population at that time was 150. The name “Gas City” would imply that it got its name from the seemingly inexhaustible supply of natural gas. The pressure at the well heads was 300 to 350 psi. Because of belief that the supply was unlimited, the gas was used lavishly and not conserved.

The founders envisioned the population of the city to reach 25,000, so they leased all of the gas rights on thousands of acres, bought about 1,200 acres of land and laid out the central portion of it as Gas City.

SAFETY SERVICES/ MUNICIPALITY

City Hall

www.gascitygov.com

(765) 677-3079

UTILITIES

Water – Vectren

www.gascitygov.com

(765) 674-6995

Trash – Provides residential pickup

Recycling – Grant County

Recycling Center (765) 677-6044

Electric – Gas City Electric/IMPA

Indiana Municipal

Power Association

www.gascitygov.com

(765) 674-6995

Gas – CenterPoint Energy

www.centerpointenergy.com

(800) 227-1376

Library: Gas City-Mill Township
Public Library

www.gcmtpl.lib.in.us

(765) 674-4718

EDUCATION

Mississinewa High School

Northview Elementary

R.J. Baskett Middle School

Denominations

Baptist Catholic

Christian Episcopal

Evangelical

Methodist

Pentecostal

RECREATION

Gas City

Historical Society

Cardinal Greenways

Gas City Park

HEalth & well

Gas City Medical Center

*Needham-Storey-Wampner
Funeral Service,
Chairman's Circle Member*



Ivy Tech Community College, Chairman's Circle Member

@/groups/Gascity



Contact us to learn more about the town of Gas City
and to keep up on the news, check out our page.

Gas City

Gas City City Hall (765) 677-3079

Jonesboro

Benefits to Living in Jonesboro

Jonesboro is a city located in Grant County, Indiana, along the Mississinewa River opposite Gas City. As of the 2000 census, the city had a total population of 1,887.

According to the United States Census Bureau, the city has a total area of 2.2 square km (0.9 square mi and none of it is covered by water.



SAFETY SERVICES/ MUNICIPALITY

City Hall

www.jonesboroindiana.net
(765) 674-1196

UTILITIES

Water / Trash –

City of Jonesboro
(765) 674-1196

Electric – IndianaMichigan
Power Company
www.indianamichiganpower.com
(800) 311-4634

Gas – CenterPoint Energy
www.centerpointenergy.com
(800) 227-1376

Bright House Networks
(765) 662-0071
www.mybriighthouse.com

Library – Jonesboro
Public Library
(765) 677-9080

EDUCATION

Westview Elementary School
(preschool – 1st grade)

The King's Academy Christian
School (K-12).

Middle Schools (Public)

R. J. Baskett Middle School

DENOMINATIONS

Christian Methodist
Presbyterian

RECREATION

Jonesboro Historical Society
114 N. Main St. (765) 674-
2710



First Farmers Bank & Trust, Chairman's Circle Member

Jonesboro

@jonesboroIndiana

Contact us today to learn more about living in Jonesboro, Indiana, and keep up to date via our Facebook page.

Jonesboro City Hall 765-674-4393

Cruise Over to

ClassicCool
GRANT COUNTY INDIANA



ShowMeGrantCounty.com

765-668-5435

more choices
better coverage



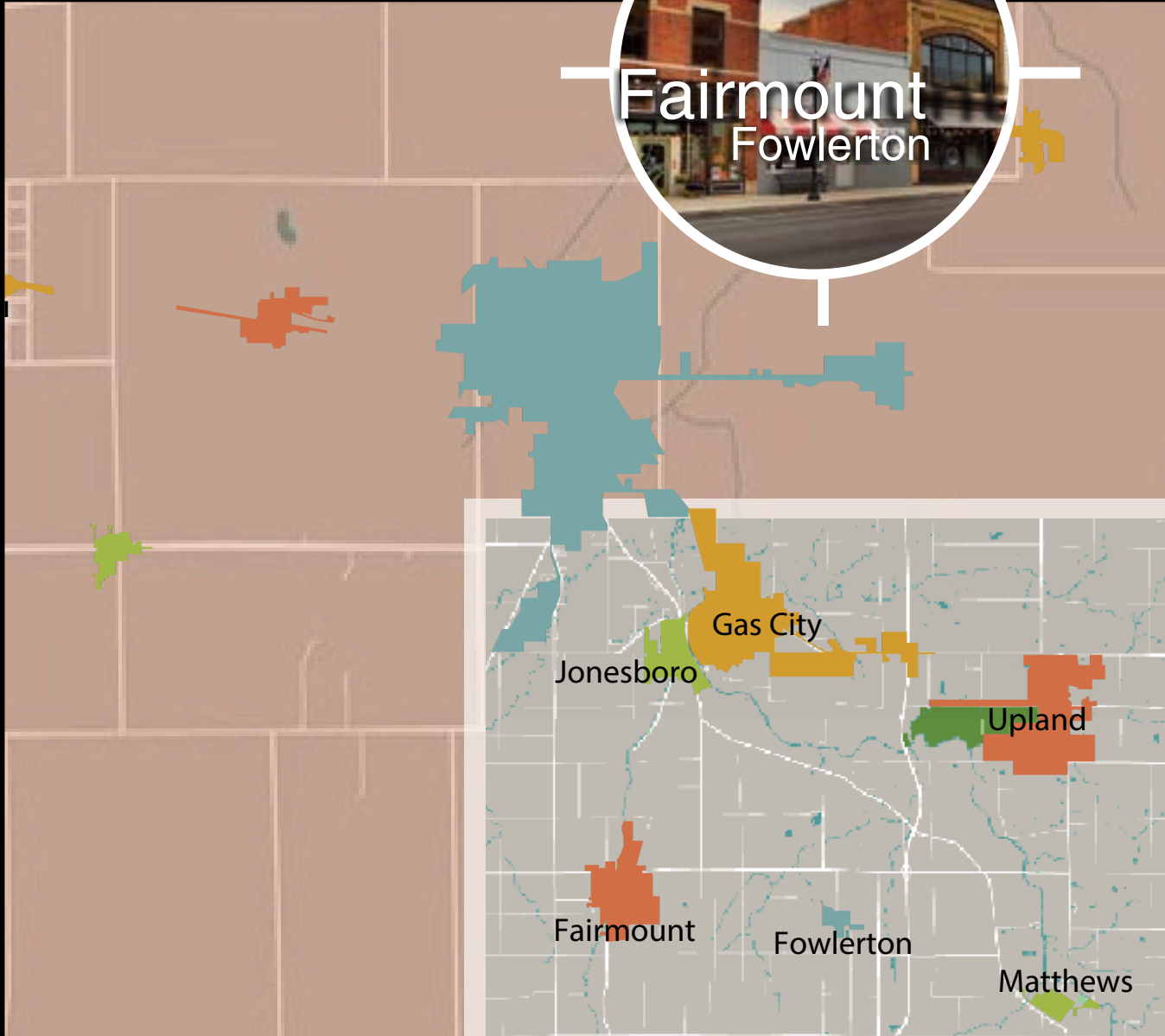
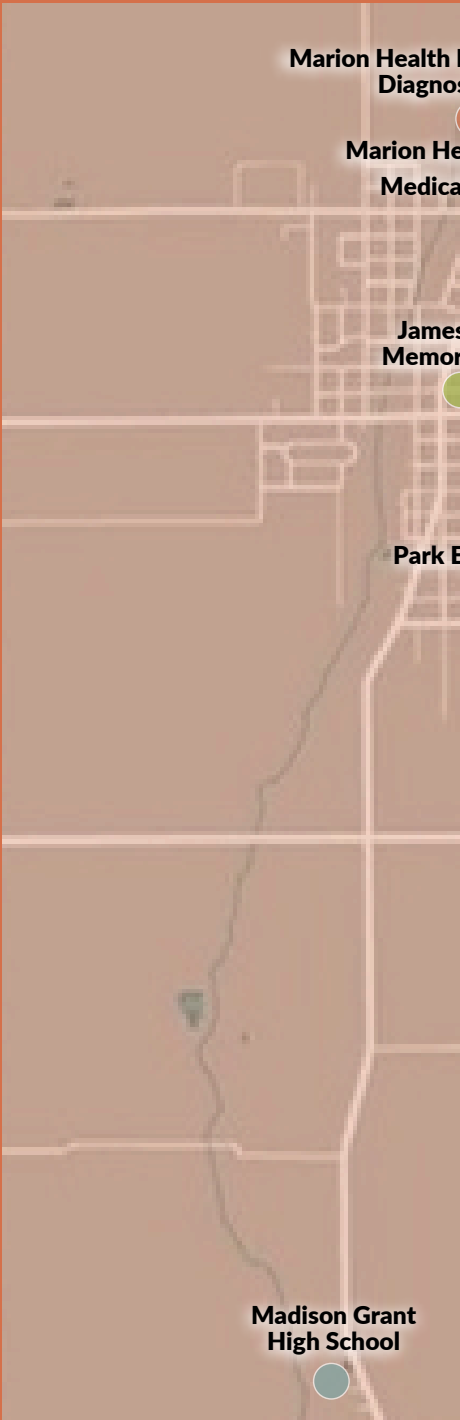
trent dailey, ceo



insurance
management
group



insurancemanagementgroup.com



Fairmount



Known for being the hometown of actor James Dean and Jim Davis, the creator of Garfield the cat, Fairmount is an idyllic town that welcomes all visitors as friends. Explore our tree-lined streets, relive historic moments, and immerse yourself in our small-town culture.

The population was 2,732, according to U.S. Census estimate. It is ninety kilometers (fifty-five miles) northeast of Indianapolis. Largely a bedroom community to its three thousand citizens, Fairmount is best known as the boyhood home of actor James Dean, who is buried there.

Benefits to Living in Fairmount,

SAFETY SERVICES/ MUNICIPALITY

City Hall
www.fairmount-in.com
(765) 948-4632

UTILITIES

Water
www.fairmount-in.com/water-department
(765) 948-4313

Trash / Recycling – Republic
Services
www.republicservices.com
(800) 989-2539

Electric – Indiana Michigan
Power Company
www.indianamichiganpower.com
(800) 311-4634

Gas – CenterPoint Energy
www.centerpointenergy.com
(800) 227-1376

Library – Fairmount
Public Library
www.fairmountlibrary.net
(765) 948-3177

EDUCATION

Park Elementary School
Madison-Grant High School

Denominations

Baptist Christian Evangelical
Methodist Non-
Denominational Spirit-Filled

RECREATION

James Dean Memorial Park
Playacres Park

Health & wellness

Marion Health Fairmount
Medical Associates
Marion Health Fairmount
Medical Diagnostic Center

Via Credit Union, Chairman's Circle Member



Fairmount

@mainstreetfairmount



Contact us to learn more about the town of Fairmount, and to keep up on the news, check out our page.

Fairmount Town Hall (765) 948-4632

Fowlerton

Explore the best trails in Fowlerton, Indiana on TrailLink. With more than 37 Fowlerton trails covering 4000 miles, you're bound to find a perfect trail like the Sweetser Switch Trail or Union City Gateway Trail.

The population in Fowlerton is 304. There are 1,551 people per square mile aka population density. The median age in Fowlerton is 27.1, the US median age is 37.4. The number of people per household in Fowlerton is 3.2, the US average of people per household is 2.6.

Benefits to Living in Fowlerton

SAFETY SERVICES/ MUNICIPALITY

City Hall

(765) 948-4636
Fairmount Public Library
www.fairmountlibrary.net
Library
(765) 948-3177

denominations RECREATION

Methodist

TrailLink
www.traillink.com/city/fowlerton-in-trails/

Paul Dash

Why do you choose to live and work in Grant County?

What do you love about living and working in Grant County?

I have been the General Manager for the Café Valley Bakery here in Marion, Indiana, for almost five years. I enjoy our smaller town feel while still having quick access to Indianapolis and Fort Wayne.

The folks here have been warm and welcoming. I am a private pilot, so I really enjoy our beautiful, well-kept Municipal Airport. It might surprise folks to know that we have a great Pilot's club here in Marion. Our club owns a Cirrus SR22, which is such an incredible privilege to fly.

My wife works for a great company with great people, and my son loves going to R.J. Baskett Middle School in Gas City. We have never felt as "at home" anywhere else as we do here.



Wiley Metal Fabricating Inc., Chairman's Circle Member



@Town-of-Fowlerton-

Contact us to learn more about the town of Fowlerton, and to keep up on the news, check out our page.



Fowlerton city Hall (765) 948-4636

Fowlerton



United Way of
Grant County

We are here to help you learn
about your new home
& get engaged.

Reach us at
www.unitedwayofgrantcounty.org
or **765-662-9811**



AT STAR, YOU'RE FAMILY.

Combining local service with state-of-the-art technology, STAR is a full-service financial institution delivering personalized business banking solutions and wealth management services.



www.starfinancial.com

Mikayla Mirazzi

Development Director – Affordable Housing and Community Development Corporation

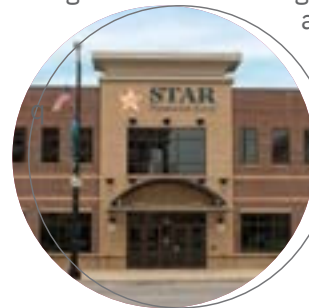
Why do you choose to live and work in Grant County?

Grant County offers the opportunity to dive deep and invest in a community with such a rich, complicated history and incredible resilience and resolve. As an old rust-belt town, we are a community navigating the growing pains of reestablishing identity, industry, and culture against the backdrop of a rapidly changing global economy—a microcosm of national trends, problems, and ideas. The work is always interesting, demanding, and meaningful.

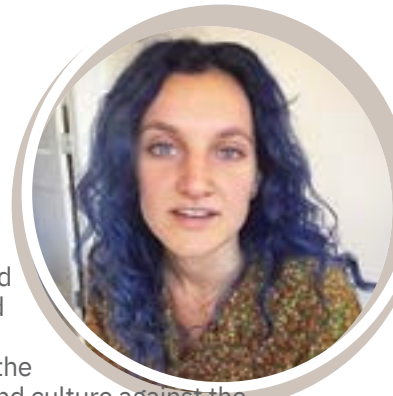
As a young professional/ recent college graduate, I have been pleasantly surprised by the ways in which this community offers the opportunity for professional development. If you are willing to dive on in, you will find a community full of opportunity and innovation. There are always boards or committees to join, entrepreneurs and new businesses to support, buildings or homes to restore, history to learn and discover, and new projects and ideas to tackle. Grant County is big enough to offer significant economic opportunities—downtown development, big industry, entrepreneurship, etc.—but small enough for you to run into friends at the park or collaborate with the business down the street.

What is one thing that might pleasantly surprise a new resident about your experience in Grant County?

Grant County is beautiful in ways you might not expect and cannot be realized until you are immersed in this community. When I moved from the west coast of Canada, away from the mountains and ocean, I was astonished to find the landscape and community particularly striking: the sky that stretches endlessly in every direction across cornfields and industrial buildings; a traditional courthouse square with limestone that dates back a century; neighborhoods featuring homes built in the early 1900s and brick paved roads; a city park featuring a Riverwalk, butterfly garden, pickleball courts, and an abundance of runners, walkers, and fishermen whenever the weather becomes warm and sunny.



STAR Financial Bank, Chairman's Circle Member



Converse

- Marion Health Family Medicine Center Converse
- Converse Junction Trail
- Borderman Park
- Converse Elementary School

Oak Hill
High School



Sweetser
Elementary School

Marion Health
Family Medicine Center - Swayzee

Walter Young
West Park

Swayzee
East Park

Swayzee
Elementary School

Swayzee

Sweetser

Converse

Sweetser

Marion

Swayzee

Jones

Converse

The Converse community maintains the values of the past while planning and progressing into the future, as it “sets the pace” with determination and innovation and continues in the tradition of community growth and quality of life.

Converse has a work-hard, play-hard philosophy. Basketball, carnivals, horse racing are just a few of the happenings to suit the adventurous personality. Converse is known as a shop-dine-play community with the neighboring communities enjoying the festive atmosphere of the annual Converse Fair, including great entertainment, delicious food and thrilling sport activities.

Converse is truly a place where everyone knows your name.

Benefits to Living in Converse

SAFETY SERVICES/ MUNICIPALITY

ConverseTownHall
(765) 395-3459

UTILITIES

The town’s Clerk’s Office serves as the billing department for the Converse Utility Department (water, sewer, storm water, trash).

Converse Public Library
(765) 395-3344

EDUCATION

Converse Elementary Oak Hill
United
School Corporation

Denominations

Non-denominational Methodist

RECREATION

Converse Fairgrounds Converse
Junction Trail The Ark Christian
Ministries

Health & Wellness

Marion Health Family Medicine
Center Converse



Indiana Wesleyan University, Chairman's Circle Member



@ConverseIndiana 

Follow the town of Converse on Facebook for announcements and town news, and check out our complete list of services. Contact us to learn more about living in Converse.

Converse

Town of Converse

(765) 395-3459

Sweetser

Sweetser, Indiana is a cozy rural community that offers small-town living with quick and easy access to metropolitan amenities. Located along Indiana State Road 18, Sweetser is within reach of Marion, Wabash, Huntington and Kokomo! Sweetser is situated within 30 minutes of four universities and two medical complexes. Sweetser has a strong agricultural history and direct ties to the railroad industry!

Sweetser is known as a town that cares for its neighbors and provides great opportunities for recreation! Sweetser is home to the Sweetser Switch Trail & the only dog park in Grant County! Come by and see what Sweetser has to offer!

Benefits to Living in Sweetser

SAFETY SERVICES/ MUNICIPALITY

City Hall

www.sweetserin.us
(765) 384-5065

UTILITIES

Trash – Republic Services
www.republicservices.com
(800) 989-2539

Recycling – Grant County
Recycling Center
(765) 677-6044

Electric – Indiana Michigan
Power Company
www.indianamichiganpower.com
(800) 311-4634

Gas – CenterPoint Energy
www.centerpointenergy.com
(800) 227-1376

Library
Converse-Jackson Public Library
www.converselib.org
(765) 395-3344



Sweetser Telephone Co
(765) 384-4311

Comteck
(765) 384-7873
www.comteck.com

Oak Hill Cablevision
(765) 384-7873

EDUCATION

Sweetser Elementary School
Oak Hill United School
Corporation
SONshine Preschool

Denominations

Baptist
Methodist

RECREATION

Sweetser Switch Trail
Pawadise Park Garfield
Trail Sweetser Parks Dept.
First Farmers Bank &
Trust Ballpark
HomeTown Heros Tour

Grant Blackford Mental Health Center, Chairman's Circle Member

Sweetser

@sweetserIndiana



Follow the town of Sweetser on Facebook for announcements and town news and check out our complete list of services.

Sweetser Town Hall

(765)384-5065



Swayzee

The Town of Swayzee is the “Only Swayzee in the World” and is legendary for hosting the famous 1964 high school basketball regional game that holds the state tournament record for nine overtimes. While the first permanent settlement in Swayzee occurred in 1845, the town of Swayzee was officially incorporated into Grant County, Indiana in 1890. Located approximately one hour north of Indianapolis on State Road 13 and State Road 19, Swayzee is a small town of just under 1,000 residents and enjoys the atmosphere of that family-friendly, small-town feeling, where everyone knows your name! A visit to Swayzee includes shopping at one-of-a-kind antique shops, visiting the Public Library, and ordering a bite from our family-friendly and locally-owned restaurants.

Stop by TTG Equipment, which carries John Deere equipment and parts for agricultural, turf, and construction projects for residential and commercial applications. The town’s Elementary school is part of the Oak Hill United School Corporation and houses all the corporation’s 5th and 6th graders.

Maybe you will visit for one of our seasonal festivals and events, such as the annual Swayzee Days Festival and Rummage Sales, or just a day of family fun at our three parks. If you’re looking to raise your family in a close-knit, rural town that focuses on community, Swayzee might be the place for you.



Benefits to Living in Swayzee, Indiana

SAFETY SERVICES/ MUNICIPALITY

CityHall
www.swayzee.org
(765) 922-7953

UTILITIES

Water – Town of Swayzee

Water Works
www.swayzee.org/townutilities
(765) 922-7645

Trash / Recycling –
Republic Services
www.republicservices.com
(800) 989-2539

Electric – Indiana Michigan
Power Company
www.indianamichiganpower.com
(800) 311-4634

Gas – CenterPoint Energy
www.centerpointenergy.com (800) 227-1376

Library – Swayzee
Public Library
www.swayzeepubliclibrary.com
(765) 922-7526

EDUCATION

Swayzee
Elementary School

Denominations

Christian
Evangelical
Methodist

RECREATION

Cardinal Greenways
Swayzee East Park
Williams West Park

HEALTH & WELLNESS

Marion Health Family
Medicine Center
– Swayzee

Northwest Bank, Chairman's Circle Member



@townofswayzee



Contact us to learn more about the town of Swayzee, and to keep up on the news, check out our page.

(765)922-7953 swayzeetown@gmail.com

Swayzee

Upland

Kiddie
Kampus

Upland Park

Depot Park

Eastbrook South
Elementary School

Taylor University

Upland

Van Buren
Matthews

Cumberland/Matthews
Covered Bridge

Matthews
Ball Field

Matthews

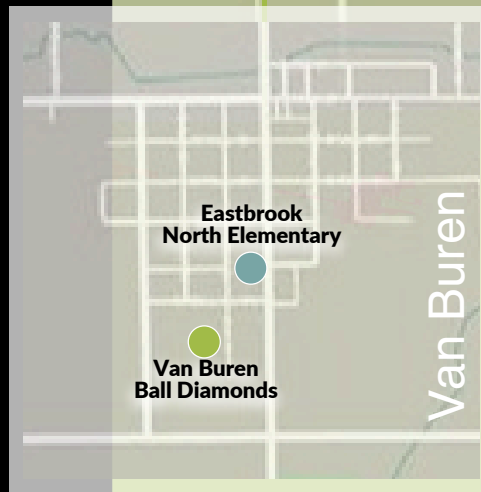


Joyce Wood

Why do you choose to live and work in Grant County?

What do you love about living and working in Grant County?

Grant County has been my home since the age of
grow up, receive an excellent education, and ultim
years. It has been a joy to literally live in “Small To
it’s been fulfilling to live, work, and play right here

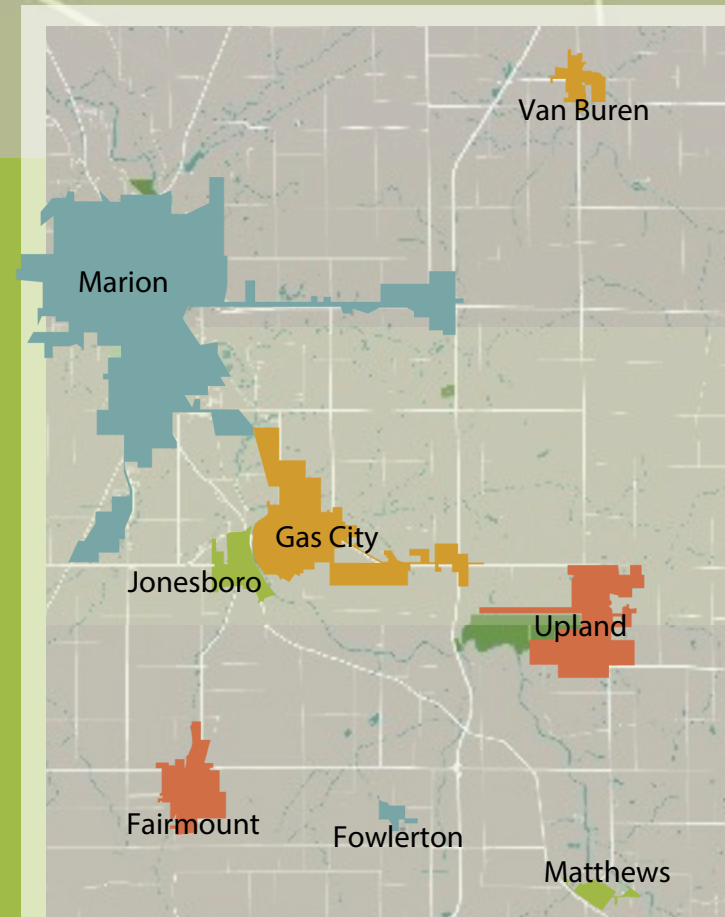


Eastbrook
North Elementary

Van Buren
Ball Diamonds

Van Buren

been an amazing place to
place to call “home” all these
not a negative at all; rather,
and.



Marion

Van Buren

Gas City

Jonesboro

Upland

Fairmount

Fowlerton

Matthews

Upland

The Town of Upland, Indiana, is located 65 miles northeast of Indianapolis and 50 miles southwest of Fort Wayne. With a population of approximately 3,700, Upland has a comfortable hometown feel, yet possesses features of larger communities.

Upland, a growing community, is the home of The Pierce Company, the famous ice cream of Ivanhoes, the beautiful Memorial Park, and the highly-ranked Taylor University. Upland welcomes the opportunity to help business grow and families have a safe and enjoyable place to call home.

Civic organizations include: Upland Area Greenways, which works to enhance quality of life by providing exceptional walking and biking trails that promote healthy living, provide safety, and improve the opportunity to attract the next generation. Our Town Upland responds to community needs by strategically engaging individuals and organizations to improve and grow while positively reflecting the small town heritage and the talent of its people. Upland Lions Club empowers volunteers to serve their community, meet humanitarian needs, encourage peace and promote international understanding. Upland Garden Club provides a way for gardening enthusiasts to share experiences in an informal, hands-on way to beautify Upland in the several town parks and flower beds.

Annual events include: Strawberry Festival, which celebrates the arrival of summer with entertainment, crafts, and the unveiling of wall of honor plaques in Depot Park. Labor Day Weekend features regionally-renowned garage sales and various events, including a parade. Christmas Tree Lighting is a beloved tradition including singing, a devotional, and celebrating the lighting of the Depot Park Christmas tree.

Benefits to Living in Upland

SAFETY SERVICES/ MUNICIPALITY

City Hall
www.uplandindiana.com

(765) 998-7439

UTILITIES

Water
www.uplandindiana.com
(765) 998-7439 ext. 2

Library: Upland Barton Rees Pogue
Memorial Library
www.upland.lib.in.us
(765) 998-2971

Education

Eastbrook South
Elementary School
Eastbrook High School
Taylor University

Denominations

Evangelical
Methodist
Non-denominational
United Methodist
Quaker

RECREATION

Upland Area Greenways
Upland Park
Depot Park

Meijer, Chairman's Circle Member



Van Buren

Van Buren is a town in Van Buren Township, Grant County, Indiana, United States. The population was 864 at the 2010 census. Joseph Boxell platted Van Buren Township in 1837. Martin Van Buren was the United States president at the time. In 1843 George H. D. Rood settled here and the creek that runs through the town was called Roods Run. As the area grew and developed it was called many names including Roods Corner, Roods Town, Roods Crossroads and Stringtown. In 1888 C.W. platted the area and it was known as Van Buren. In June 1892 the town became incorporated by the state of Indiana. Van Buren bills itself as the "Popcorn Capitol of the World." The largest local employer is the Weaver Popcorn Company; accordingly, its most famous annual event is the Popcorn Festival, held each August.

Benefits to Living in Van Buren

SAFETY SERVICES/ MUNICIPALITY

CityHall
www.vanburenindiana.org
(765) 934-3991

UTILITIES

Water / Trash–
Town of Van Buren
(765) 934-3991 Electric –
Indiana Michigan
Power Company
www.indianamichiganpower.com

m
(800) 311-4634

Gas – CenterPoint Energy
www.centerpointenergy.com
(800) 227-1376

Library
Van Buren Public Library
www.vbpl.lib.in.us
(765) 934-2171

EDUCATION

Eastbrook North
Elementary School

DENOMINATIONS

Christian Evangelical
Methodist

RECREATION

Van Buren Ball Diamonds



*Afena Federal Credit Union,
Chairman's Circle Member*

Van Buren

@vbindiana



To learn more about the town of Van Buren, and to keep up on the news, check out our page.

Van Buren Town Hall

(765)934-3991

Matthews



Matthews is located in Jefferson Township near the Mississinewa River. Matthews is known for its historical beginnings during the early 1900s and the Gas Boom Era, and the wide main street with prospects of becoming the state capital. Now, Matthews remains a quaint little town and a great place to raise kids with a population of around 600 people, with the Cumberland Covered Bridge Festival as the highlight during the weekend after Labor Day.

Benefits to Living in Matthews

SAFETY SERVICES/ MUNICIPALITY

City Hall
www.townofmatthews.com
(765) 997-1542
Library
(765) 997-1540

Denominations

Baptist Evangelical
United Methodist

RECREATION

Matthews Park Cumberland
Covered Bridge



Beacon Credit Union, Chairman's Circle Member

Indiana

- FtWayne- 56 mins - 51.1 miles (via I-69)
- Indianapolis - 1 hr 21 mins - 85.4 miles (via I-69)
- South Bend - 1 hr 27 mins - 101 miles (via US-31)

Ohio

- Columbus - 2 hr 54 mins - 166 miles (via US-33)
- Cincinnati - 2 hr 59 mins - 161 miles (via I-74)
- Cleveland - 3 hr 54 mins - 255 miles (via I-90)

Michigan

- Lansing - 2 hr 43 mins - 181 miles (via I-69)
- Detroit - 3 hr 15 mins - 213 miles (via I-75)
- Grand Rapids - 3 hr 19 mins - 224 miles (via I-69)

Illinois

- Chicago - 3 hr 24 mins - 173 miles (via US-31)
- Springfield - 4 hr 21 mins - 257 miles (via I-74 & I-72)
- Peoria - 4 hr 17 mins - 258 miles (via I-74)

Kentucky

- Louisville - 2 hr 56 mins - 195 miles (via I-69 & I-65)
- Lexington - 4 hr 6 mins - 241 miles (via I-75)

INDIANA DRIVING TIMES:

- Muncie - 44 mins - 38.1 miles (via I-69)
- Lafayette - 1 hr 34 mins - 72.4 miles (via IN-18)
- Bloomington - 2 hr 30 mins - 139 miles (via I-69)
- Terre Haute - 2 hr 33 mins - 165 miles (via I-69 & I-70)
- Evansville - 4 hr 7 mins - 260 miles (via I-69)

SALAMONIE RESERVOIR:

- 26.9 miles - 39 minute drive North
- Tent Camping /Pull-thru Sites
- Boating/Launch Ramps/Marina
- Bridle Trails
- Canoeing/Kayaking
- Fishing Pier
- Swimming/Beach
- Waterskiing

MISSISSINewa RESERVOIR:

- 30.8 miles - 37 minute drive North West
- Full Hook up Camping/Rent-A-Camp Cabins
- Boating/4 Launch Ramps/Marina
- Fishing Piers-2
- Frisbee Golf Course
- Hiking Trails Frances Slocum SRA
- Swimming/Beach
- Waterskiing



FORT WAYNE

51.1 MILES

FROM GRANT COUNTY

Museums

Fort Wayne Aviation Museum
Fort Wayne Museum of Art
Science Central

Sports Venues

Allen County War Memorial Coliseum
Grand Wayne Convention Center
Spiece Fieldhouse
Parkview Icehouse
Parkview Field

Recreational Activities

Fort Wayne Children's Zoo
Johnny Appleseed Memorial Park
Lakeside Park Rose Gardens
Jefferson Pointe Mall
Glenbrook Square Mall

Universities

Purdue University - Fort Wayne
Indiana Tech
University of Saint Francis

INDIANAPOLIS

81.4 MILES

FROM GRANT COUNTY

Museums

The Children's Museum of Indianapolis
NCAA Hall of Champions
Newfields

Sports Venues

Indianapolis Motor Speedway
Bankers Life Fieldhouse
Hinkle Fieldhouse
Lucas Oil Stadium
Victory Field

Recreational Activities

Indianapolis Zoo
White River State Park
Monon Trail
Circle Centre Mall
The Fashion Mall at Keystone

Universities

Butler University
IUPUI
Marian University
University of Indianapolis

SOUTH BEND

101 MILES

FROM GRANT COUNTY

Museums

Studebaker National Museum
Healthworks Kids' Museum
South Bend Museum of Art
Snite Museum of Art

Sports Venues

Compton Family Ice Arena
Notre Dame Stadium
Four Winds Field

Recreational Activities

Potawatomi Zoo
Rum Village Park
Howard Park
University Park Mall

Universities

University of Notre Dame
Indiana University South Bend
Holy Cross College
Bethel University
Saint Mary's College
Goshen College

CHICAGO

173 MILES

FROM GRANT COUNTY

Museums

Field Museum of Natural History
Museum of Science and Industry
Art Institute of Chicago

Sports Venues

Wrigley Field
Soldier Field
United Center
Wintrust Arena
Toyota Park

Recreational Activities

Lincoln Park Zoo
Shedd Aquarium
Willis Tower
Navy Pier
Millennium Park

Universities

The University of Chicago
Loyola University Chicago
Northwestern University
DePaul University



Westminster Preschool

Christian Faith Preschool

Offering:

Year Round Programs for children ages 6 weeks - 12 years old!

- Full Day Child Care
- Half-Day Child Care
- After School

Specializing in:

- Positive Guidance and Social/Emotional Based Programming
- Montessori Inspired, Play Based Hands on Learning and Creative Arts
- Spanish and Sign Language Immersion

Recognized for:

- Level 3 Paths to Quality
- Health and Safety
- Christian Curriculum
- On My Way Pre-K Provider
- Accepts CCDF Vouchers
- Highly Educated and Trained Staff



TWO LOCATIONS:

**North - 1100 W. Jeffras Ave.
765-662-3526**

**South - 5318 S. Western Ave.
765-573-5310**

www.westminsterpreschoolmarion.com

Let the Adventure Begin!



THIS IS THE BEGINNING...

Welcome to Afeana!

If you're looking for a financial institution that will treat you like a member (not a credit score), listen to your whole financial story, and help you figure out how to reach your financial goals, look no more!

Afeana Federal Credit Union has a full suite of financial products to meet your needs, including high-interest checking and loan options to fit every credit score. We're here to help you and your family today, and everyday, with locations in Marion and Upland. Visit us online or give us a call to learn more.

WE'RE IN THIS TOGETHER

www.afenafcu.org | 765.664.8089

We are...



You can be too!

1009 Kem Road, Marion

Church: 765-664-6345

School: 765-662-2883

www.stpaulcatholicmarion.org



@StPaulMarion



@stpaulcatholicmarion @StPaulCatholicMarion



Catholic Church

Saturday Vigil in Spanish 5:00 PM

Sunday 10:00 AM & 5:00 PM

Elementary School

K to 6 academic
community

Preschool

Offering 3/4 Year-old &
Pre-K Classes



**Mitra Majumdar
Architect,
Halstead Architects**

*Why do you choose to live
& work in Grant County?*

*What do you love about living
and working in Grant County?*

"I moved to Grant County for work three years ago. At first, Marion seemed like a peaceful, quiet city with a beautiful river and lots of elegant old buildings! But with time this city is revealing its layers. I realized that Marion is truly inclusive - I've always felt welcomed here. Sense of belonging to a community is something we all desire and 'Marionites' provide friendship and support to newcomers and created a strong community. The city is constantly working on community development. As an architect I feel lucky that I got to work both on beautiful historic buildings and new commercial facilities in Marion which indicates the city respects its past, responsibly conserving it and at the same time it is growing with new businesses. There are events and meetings arranged by different organizations dedicated to the city to attract new business and keep the community active and informed. People of Marion and young professionals are remarkably passionate about this place and working hard for rejuvenating downtown and the city. It's great to live amongst diligent dreamers and see Marion growing, spreading and moving towards reclaiming its past glory!"



Regions Bank, Chairman's Circle Member

RIDLEY TOWER

APARTMENTS & TENANT SPACE FOR LEASE

Historic Ridley Tower is ready for residential and commercial tenants to call this seven story tower "home". Residential units range from 1 Bedroom & 1 Bathrooms up to 3 Bedrooms & 2 Bathrooms. Commercial space is available for rent on the 2nd floor looking over the grand lobby.



CONTACT US TO RESERVE YOUR SPOT TODAY




Suzie Mack
F.C. Tucker Realty
suzie.mack@talktotucker.com
(765) 661-0379



Michael W. Halstead
HALSTEADarchitects
MikeH@Halstead-Architects.com
317-684-1431 x 111





With every closing, we're
opening doors.

Ruoff Mortgage helps people discover, finance and move into their homes with confidence. We know the way home. We'll walk there with you.



Lindsey DeWitt

Senior Loan Officer
NMLS: 740338

765.669.4430

lindsey.dewitt@ruoff.com

lindseydewitt.com



Scott Murphy

General Manager - Walmart DC7055 - GasCity, Indiana

*Why do you choose to live and work in Grant County?
What do you love about living and working in Grant County?*

Grant County is a wonderful spot to raise a family. People throughout Grant County are warm and friendly. Educational opportunities are good, with good public schools and two strong Universities. There is a wide variety of sports and performing arts to help develop children and adults. The pace of life is moderate and within a short drive of the hustle and bustle of Indy or Ft. Wayne.

Family and friends are the centerpiece of Grant County. There are festivals and community activities throughout the year, but the heart of the county are the people and relationships that bond neighbors and friends.

There are countless opportunities to help support each other through a number of non-profits. From youth activities to supporting seniors, these organizations enhance the quality of life here in Grant County. My favorite place is the softball fields at the PAL club. The development of our kids is an investment in our future, whether in the classroom, library, softball field, or performing arts center.

Grant County has it all to offer, as well as some of the most welcoming people in the world.



Don't miss your GIANT opportunity!

Have you heard? Marion Community Schools is the place to be! Our alumni can be found across the globe making a GIANT difference! Check out just some of what we have to offer:

- ✓ 70% of Marion High School students earn college credit before graduating. Even more impressive, many earn college associate's degrees in high school, saving them time and money and putting them a big step ahead for life!
- ✓ Marion Regional Career Center students serve internships with local and regional partners and earn dozens of industry certifications every year.
- ✓ Our Cybersecurity and IT Academy is nationally recognized, and our state champion e-sports program is open to grades 5 through 12.
- ✓ MHS has the county's only JROTC program, and it is rated in the top 10% of programs in the nation by the U.S. Army, with state and national championships, ROTC college scholarship winners, and a Junior Olympian!
- ✓ The Indiana State School Music Association has named Marion Community Schools one of the best music ed programs in the state several years in a row.
- ✓ The CSA Arts Academy offers pre-professional training PLUS all the best that Marion Community Schools has to offer.

MARION
COMMUNITY SCHOOLS

It's a great time to be a Giant!
Learn more at www.marion.k12.in.us

If you need us, we are here to help!

For over 40 years, Grant-Blackford Mental Health has provided Grant County and Blackford County residents with services including individual, group and family therapies. Treatment is offered for depression, anxiety, anger, trauma, gambling, substance abuse, and more. The facility operates an inpatient unit for acute crises such as suicidal behaviors, substance detox, and those with severe and persistent mental illness. Twenty-four hour crisis support is always available. In addition, the Center is a great place to work! We offer a wide variety of employment opportunities and are always looking to welcome new faces to our work family!



Grant-Blackford
Mental Health
505 N. Wabash Ave. Marion, Indiana 46952
765-662-3971 • www.cornerstone.org





MARION HEALTH

Available services include:

- Acute Rehabilitation Care
- Cardiovascular Services
- Critical Care
- Emergency & Urgent Care
 - Hematology & Medical Oncology
- Laboratory Services
- Neurodiagnostics
- Nutrition Counseling
- OB/GYN
- Occupational Health
- Pediatrics
- Physical, Occupational & Speech Therapy
- Primary Care
- Radiology
- Respiratory Therapy
- Sleep Lab Services
- Surgery
- Wound Care Clinic
- And More!

Marion Health - MGH Campus
441 N. Wabash Ave.
Marion, IN 46952

Committed to bringing new and enhanced services to this region.

With over 1,300 employees, Marion Health delivers advanced, cost-effective health services with over 240 providers across more than 30 specialties to care for you. Every day Marion Health works to bring expert healthcare to Grant County by offering expanded services, improving access to personalized care, and addressing public health challenges.

As one of the top rural community hospitals in the country, Marion Health has achieved local and national recognition for providing outstanding services, excellent patient outcomes, and seamless compassionate care.

For more information.

Visit **mg^h.net**.

Find an MGH provider near you.

Call **765-660-6444**.

